

Reactis V2014

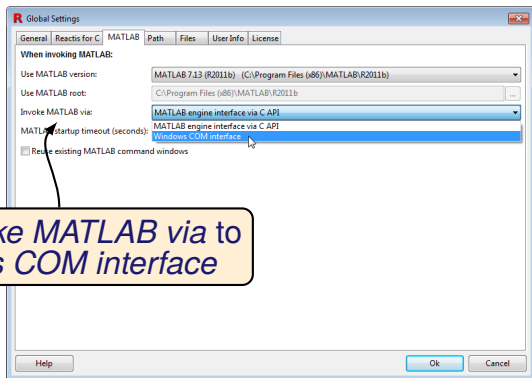
Released June 25, 2014



New Simulink Support

- ▶ R2014a.
- ▶ Stateflow box states within graphical functions.
- ▶ Bus To Vector blocks.
- ▶ Mask parameter block promotion.

Switch MATLAB Versions Without Administrator Privileges



Set *Invoke MATLAB* via to
Windows COM interface

Version

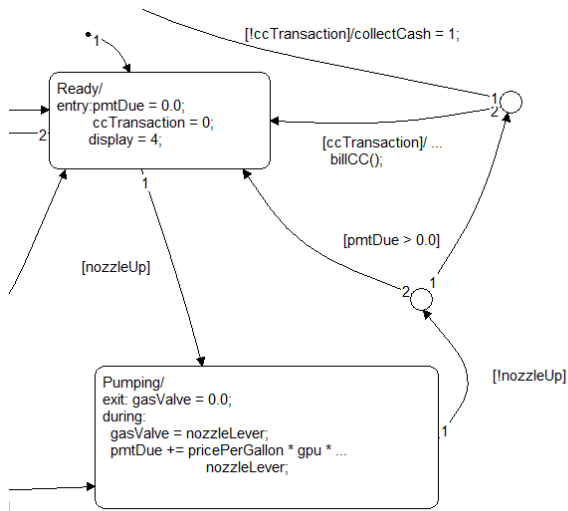
R2006b or earlier
R2007b through R2011b
2012a and later

Compatible?

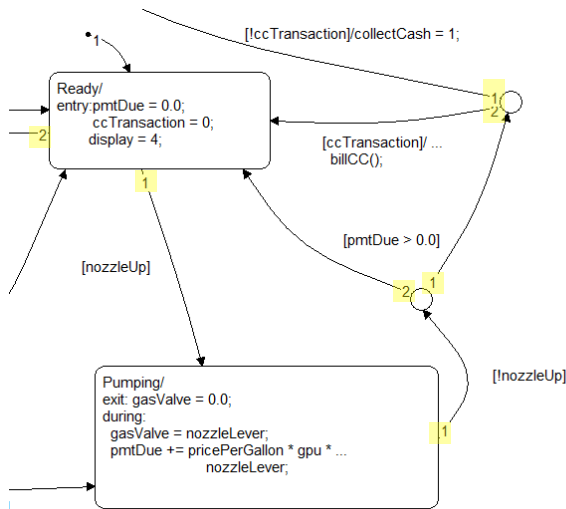
No
Partially
Fully

- ▶ When extracting a subsystem whose inports or outports are virtual buses, Reactis now automatically creates a Simulink.Bus object to define the bus structure of the port in the exported subsystem.
- ▶ Avoids errors about missing signals when simulating the extracted subsystem.

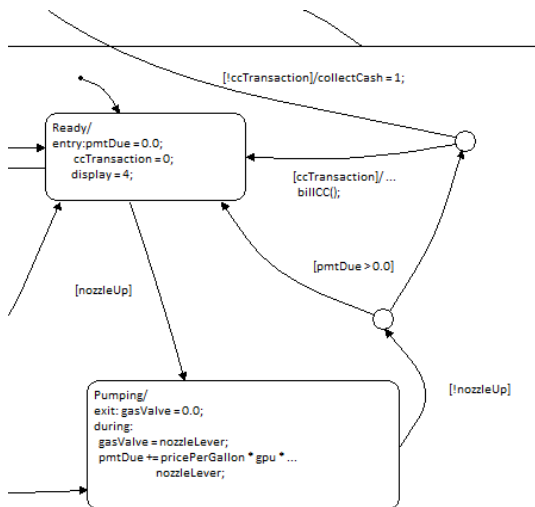
Display Stateflow User-Defined Transition Ordering



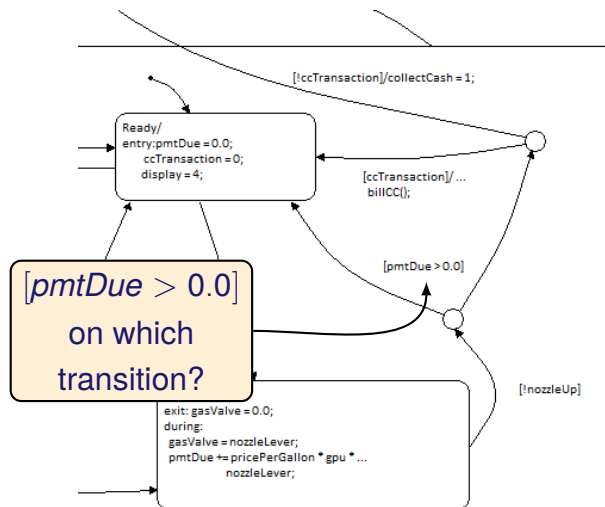
Display Stateflow User-Defined Transition Ordering



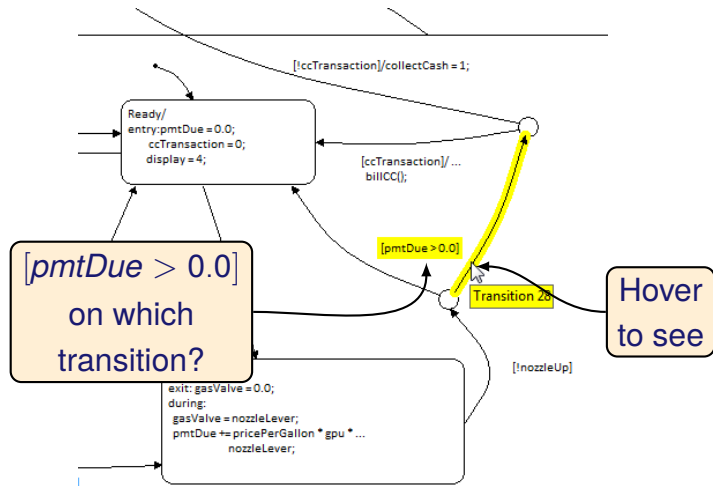
Highlight Stateflow Transition Label with Segment



Highlight Stateflow Transition Label with Segment



Highlight Stateflow Transition Label with Segment



Other Enhancements

- ▶ New API functions to add Validator objectives
- ▶ When exporting to .csv format it is now possible to specify the number of significant digits for the exported data.

Reactis for C Plugin Enhancements

- ▶ Inf or NaN values can be flagged as warnings or errors
- ▶ Create decision target for all boolean expressions in program.
 - ▶ Previously only boolean expressions determining execution path were targets, e.g. those in if, while, for statements.
 - ▶ New mode, also tags $y||z$ as decision in:
 - ▶ $y||z?e_2 : e_3;$
 - ▶ $z = y||z;$
- ▶ Decision tagging is configurable setting